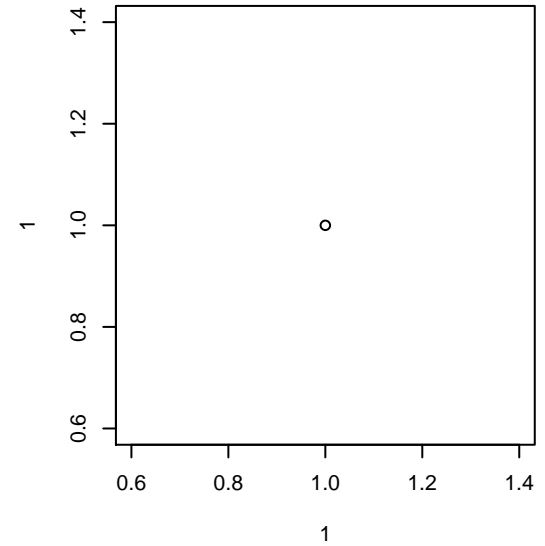


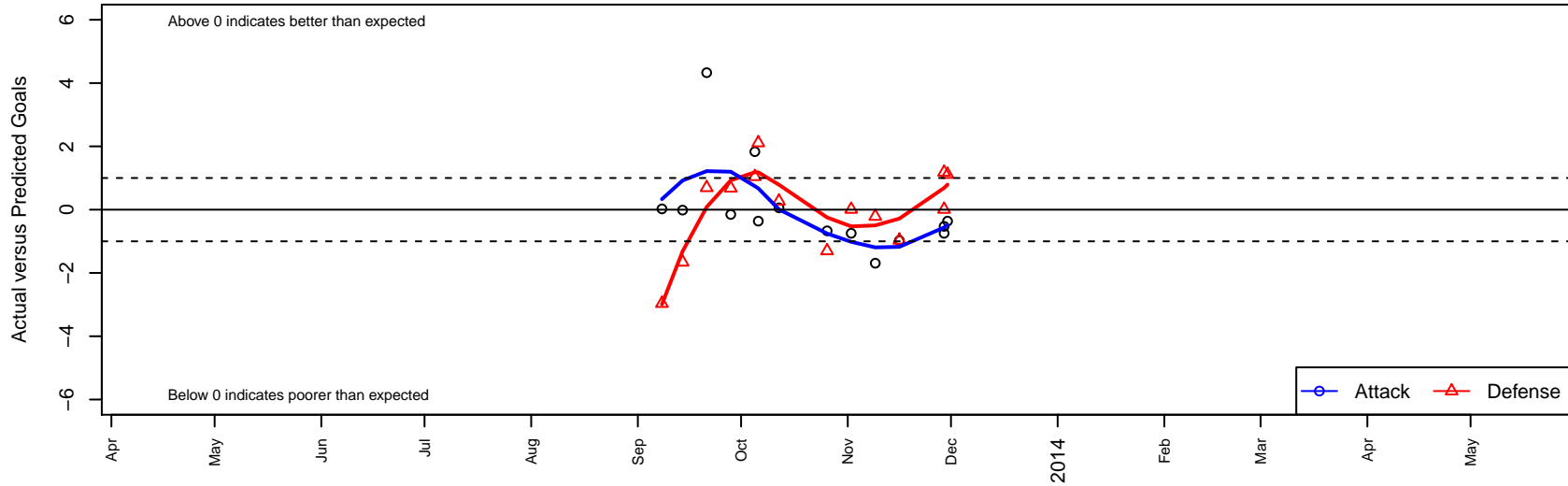
San Diego Surf SC Academy II B99

San Diego SC
 San Diego, CAS
 B99 total strength=1328
 attack=8.67 defense=4.49
 fall league = SCDL FI1 U14
 alt names used:
 San Diego Surf Boys Academy II U14
 SD SURF SC ACADEMY II (CAS)

Venues played:
 SCDL FI1 U14
 SoCal DL Fall Showcase Flight 1 U14
 Surf Thanksgiving Gold U14



San Diego Surf SC Academy II B99
 Dots are actual minus expected GF (blue circles) and GA (red triangles).
 Blue line is smoothed change in attack strength. Red is smoothed change in defense strength.



	date	home		away		venue	pred.home	pred.away
20148	2013-11-30	San Diego Surf SC Academy II B99	0	Notts Forest Premier B99	2	Surf Thanksgiving Gold U14	0.36	3.11
19693	2013-11-29	Beach FC Black B99	4	San Diego Surf SC Academy II B99	0	Surf Thanksgiving Gold U14	4.01	0.75
19695	2013-11-29	SC del Sol Leebrook White B99	8	San Diego Surf SC Academy II B99	0	Surf Thanksgiving Gold U14	9.18	0.53
18639	2013-11-16	San Diego Surf SC Academy II B99	0	Slammers FC B99	5	SCDL FI1 U14	0.98	4.03
17887	2013-11-09	West Coast FC United B99	1	San Diego Surf SC Academy II B99	0	SCDL FI1 U14	0.79	1.69
16974	2013-11-02	Beach FC Black B99	4	San Diego Surf SC Academy II B99	0	SoCal DL Fall Showcase Flight 1 U14	4.01	0.75
16076	2013-10-26	San Diego Surf SC Academy II B99	0	Encinitas Express White B99	4	SCDL FI1 U14	0.67	2.70
14099	2013-10-12	San Diego Surf SC Academy II B99	1	West Coast FC B99	4	SCDL FI1 U14	0.94	4.27
13423	2013-10-06	San Diego Surf SC Academy II B99	0	Notts Forest Premier B99	1	SCDL FI1 U14	0.36	3.11
13084	2013-10-05	San Diego Surf SC Academy II B99	6	Nomads SC B99	0	SCDL FI1 U14	4.17	1.04
12123	2013-09-28	Pateadores Pre-Academy B99	2	San Diego Surf SC Academy II B99	1	SCDL FI1 U14	2.68	1.15
11185	2013-09-21	San Diego Surf SC Alvarez B99	2	San Diego Surf SC Academy II B99	6	SCDL FI1 U14	2.69	1.67
10209	2013-09-14	San Diego SC Academy Navy B99	3	San Diego Surf SC Academy II B99	1	SCDL FI1 U14	1.34	1.01
9566	2013-09-08	Slammers FC B99	7	San Diego Surf SC Academy II B99	1	SCDL FI1 U14	4.03	0.98